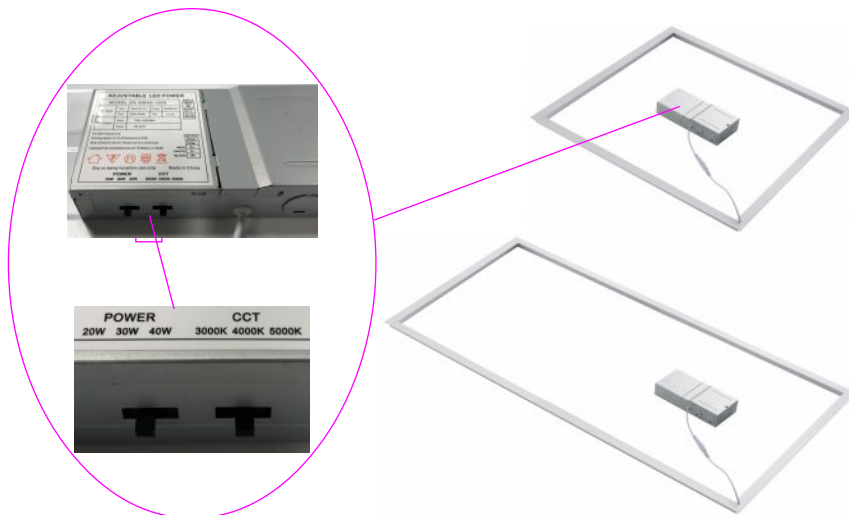
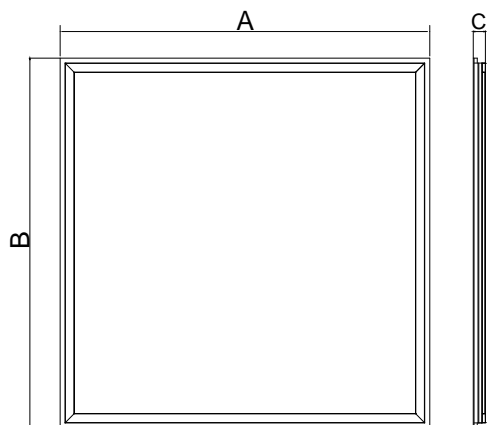


T-LED EDGE LIGHT



Maximum overall	A	B	C
2*2ft	603mm	603mm	15mm
2*4ft	1213mm	603mm	15mm



FEATURES

Input voltage: AC100-277V

Operating frequency: 50/60Hz

Power factor: > 0.95

Ambient temperature range: -20°C ~+45°C

Color Temp: 3000-5000K

Dimmable: 0-10V

THD: ≤10%

IP Rating: IP40

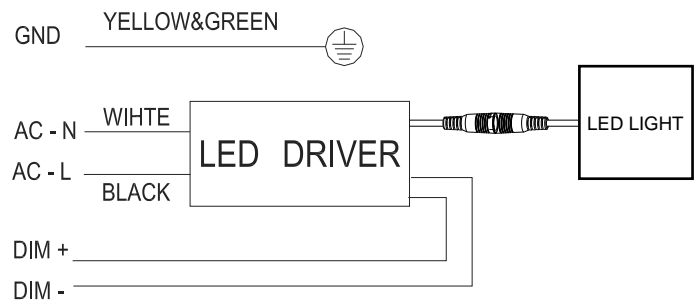
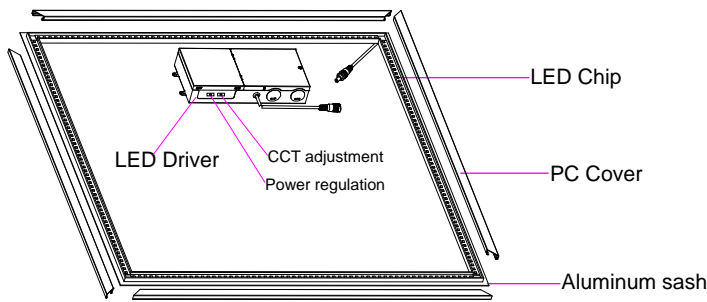
CRI: >Ra80

Beam angle: 120°

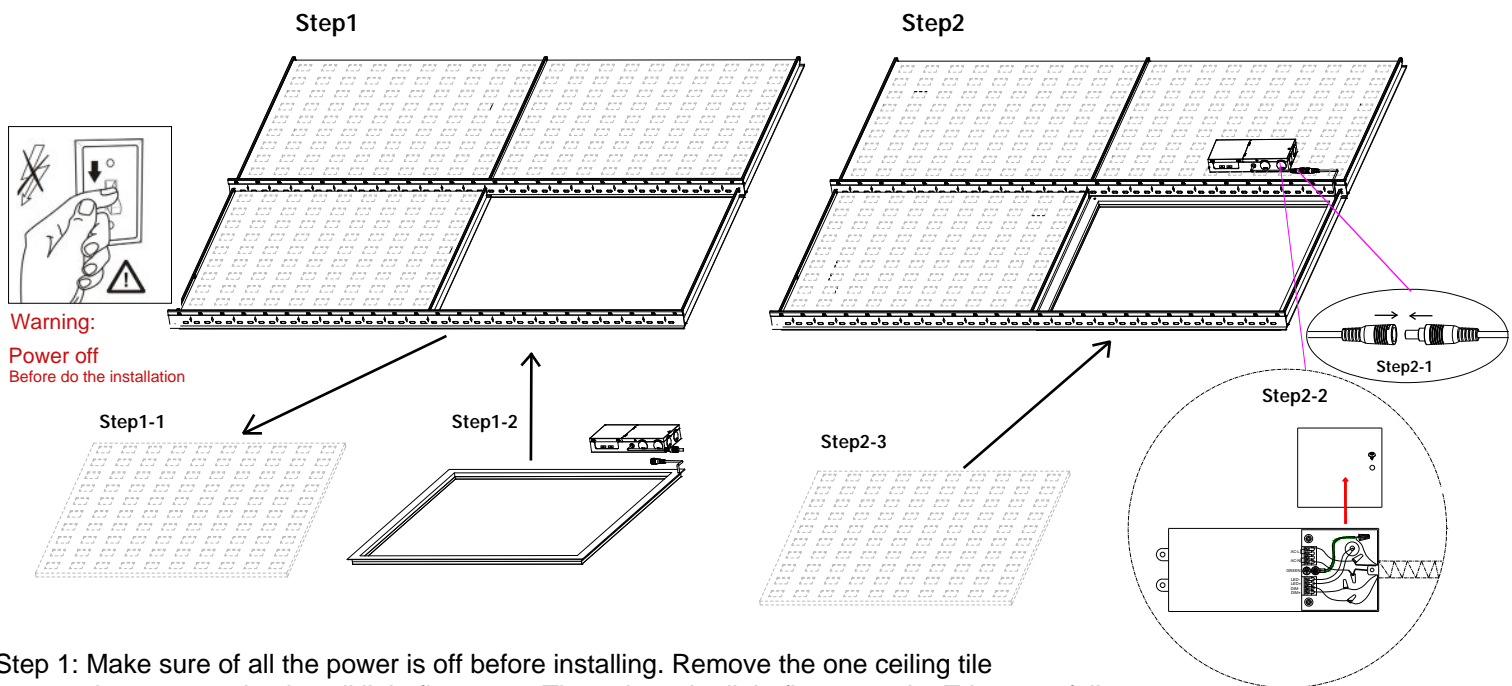
- Luminous Flux:>125lm/w
- Housing material:6063-T5
- 5 years' warranty
- ETL & DLC Premium

PARAMETER

Length	Product code	Certification	CRI	Wattage	Description Function	Lumens 3000-5000K	Packing/carton	G.W./carton
2*2FT	ZS-FL2*2-K40-3050	ETL/cETLus,DLC,	>80	20/30/40W	3-in-1 dimming(0-10V;PWM;Rx) CCT Tunable & Power adjustable	2500-5000 lm	690*230*650mm 6 pieces 1*40HQ Loading=4080pcs	7.2kg
2*4FT	ZS-FL2*4-K60-3050	ETL/cETLus,DLC,	>80	40/50/60W	3-in-1 dimming(0-10V;PWM;Rx) CCT Tunable & Power adjustable	5000-7500 lm	1300*230*650mm 6 pieces 1*40HQ Loading=2160pcs	9.5kg



INSTALLATION INSTRUCTION



Warning:
Power off
Before do the installation

Step 1: Make sure of all the power is off before installing. Remove the one ceiling tile that you need to install light fixture on. Then place the light fixture on the T-bar carefully and make sure it is correctly in place and secure.

Step 2: Place the driver on top of the next ceiling tile. Connect the cable between the driver and the lighting fixture.

Step 3: Open the driver's junction box and connect the AC wire to the driver correctly (L=black & N=white)

Warning:

Make sure all the power is off before installation.
All the installations are required to be done by professionals.